



# RBC Managed Payout Solution – Enhanced Plus

(formerly RBC Tax Managed Return Fund)



**Martin Paleczny, CFA**  
Vice-President and Senior Portfolio Manager, Asset Allocation and Derivatives, RBC Asset Management Inc. Industry Experience: Since 1994



**Suzanne Gaynor**  
Vice-President and Senior Portfolio Manager, Global Fixed Income and Currencies, RBC Asset Management Inc. Industry Experience: Since 1988

**Fund Inception Date** April 2002  
**Net Assets** \$1,845.3MM  
**NAV – Series A** \$8.48  
**2008 MER – Series A\*** 1.84%

**Distribution Policy**  
Income: Monthly  
Capital Gains: Annually (Dec.)

**Benchmark**  
40% DEX Universe Bond Index  
40% S&P/TSX Composite Capped Total Return Index  
15% S&P 500 Total Return Index (CDN\$)  
5% DEX 30 Day T-Bill Index

\* Based on actual expenses for half-year period January 1 to June 30, 2008, expressed on an annualized basis.

**Investment Objectives**  
To provide as high a regular monthly distribution as possible, including dividends, realized capital gains, other income and a return of capital, without continuing significant erosion of the net asset value of the fund.

**Fund Code**  
Series A – RBF 578  
Advisor Series ISC – RBF 760  
Advisor Series Low Load – RBF 108  
Series F – RBF 635

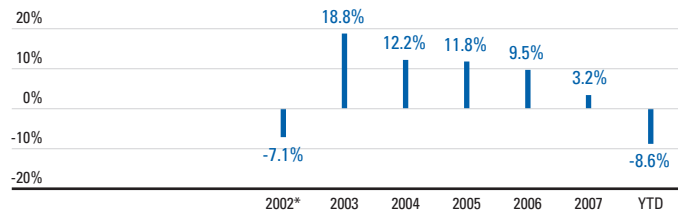
	Registered	Non-Registered
<b>Minimum Investment</b>		
Initial Investment	\$5,000	\$5,000
Additional Investment	\$25	\$25
Pre-Authorized Contribution	\$25	\$25

## Trailing Performance – Series A

	1 mo.	3 mo.	6 mo.	1 yr.	3 yr.	5 yr.	10 yr.	Since Inception
<b>Fund (%)</b>	-8.4	-9.6	-7.2	-8.3	1.1	6.7	–	5.7
<b>Quartile Ranking*</b>	3	2	3	2	2	2		

\* Source : Morningstar Canada

## Calendar Performance – Series A



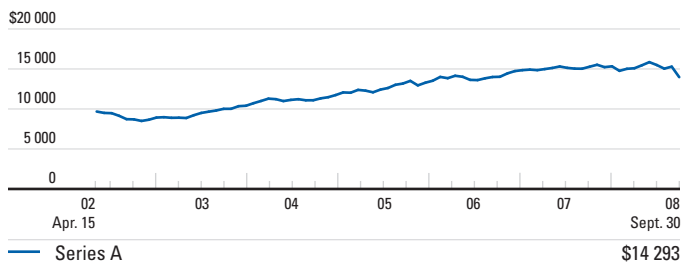
\* Return for the period April 15, 2002 to December 31, 2002.

Quartile Ranking†	2002	2003	2004	2005	2006	2007	YTD
	2	2	3	3	2	3	

† Source: Morningstar Canada

## Performance History

(Growth of \$10,000 over 10 years or since inception)



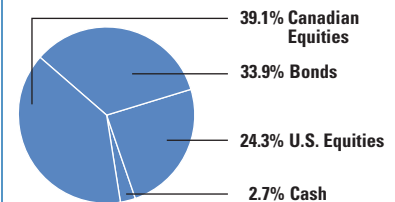
## Summary of Investment Portfolio

Top 25 Holdings	Market Value (\$000)	% of Net Assets	Top 25 Holdings	Market Value (\$000)	% of Net Assets
Cash & Cash Equivalents	328 430	17.8	Canada Housing Trust No. 1		
Royal Bank of Canada	57 056	3.1	4.050% Mar 15 11	30 476	1.7
Manulife Financial Corporation	49 374	2.7	Canada Housing Trust No. 1		
EnCana Corp.	45 923	2.5	3.600% Jun 15 13	29 689	1.6
Toronto-Dominion Bank	43 840	2.4	Research In Motion Ltd.	26 264	1.4
Canada Housing Trust No. 1			Goldcorp Inc.	25 962	1.4
3.750% Mar 15 10	43 367	2.4	Prov. of Ontario 4.000% May 19 10	25 276	1.4
Bank of Nova Scotia	42 021	2.3	TransCanada Corp.	22 713	1.2
Canada Housing Trust No. 1			BCE Inc.	21 416	1.2
4.800% Jun 15 12	41 474	2.2	Sun Life Financial Inc.	21 294	1.2
Gov. of Canada 4.250% Jun 01 18	39 486	2.1	Canadian National Railway Co.	20 708	1.1
Canadian Natural Resources Ltd.	37 461	2.0	Prov. of Ontario 5.850% Mar 08 33	19 621	1.1
Suncor Energy Inc.	37 081	2.0	Bank of Montreal	19 065	1.0
Potash Corp. of Saskatchewan Inc.	36 762	2.0	Canadian Imperial Bank of Commerce	18 648	1.0
Gov. of Canada 5.750% Jun 01 33	31 017	1.7	<b>Total</b>	<b>1 114 424</b>	<b>60.5</b>

The Summary of Investment Portfolio may change due to ongoing portfolio transactions of the investment fund.

## Portfolio Composition

**Asset Mix**  
(after consideration of derivative products)





# RBC Managed Payout Solution – Enhanced Plus

(formerly RBC Tax Managed Return Fund)

## Commentary

- Over the past three months, the RBC Managed Payout Solution – Enhanced Plus declined 9.6%.
- The flare-up over the health of the financial system and economic growth resulted in a massive risk aversion which caused bond yields to plunge in a near straight-line fashion during the quarter. Investors fled anything that seemed the least bit risky and rushed toward the safety of Treasury bonds. As a result, fixed-income funds outperformed during the period. The top-performing fund was the RBC Canadian Short-Term Income Fund, with a gain of 0.5%. The heavy weighting in the RBC Managed Payout Solution – Enhanced Plus, down 9.6%, detracted from overall performance due to its large allocation to equity markets.
- A concern over the possibility of a looming recession resulted in a massive sell-off in equities, particularly commodity stocks. Previous sector leaders such as Energy, Materials and Industrials, have declined significantly, sending the resource-laden S&P/TSX Composite Index lower by 18.2%, since the beginning of the quarter. Nevertheless, the RBC Canadian Dividend Fund fared significantly better than the Index, declining 8.2% during the quarter, supported by the strength in the Financials sector which advanced 2.6%.

### DISTRIBUTION SUMMARY

RBC Managed Payout Solution – Enhanced Plus

Current Monthly Cash Flow	0.06¢/unit
Expected Annual Cash Flow	0.72¢/unit
Current NAV (September 30)	\$8.4757
Current Cash Flow Payout Rate <sup>1</sup>	8.5%

<sup>1</sup> Assuming 12 consecutive months at the current monthly cash flow set out above. The estimate does not include any year-end capital gains distributions paid in addition to the regular monthly distribution. The yield estimate should not be confused with mutual fund performance data or rates of return.



### Distributions – Series A

	YTD	2007	2006	2005	2004	2003
MER (%)	1.84*	1.85	1.86	1.86	1.91	1.95
Total Distributions (\$)	0.5400**	0.72	0.72	0.72	0.72	0.88
Interest	–	0.03	0.04	0.00	0.01	0.07
Dividends	–	0.07	0.08	0.05	0.10	0.07
Capital Gains	–	0.17	0.39	0.10	0.15	0.10
Return of Capital	–	0.45	0.21	0.57	0.46	0.64

\* Based on actual expenses for half-year period January 1 to June 30, 2008, expressed on an annualized basis.  
 \*\* Distributions are characterized into income type at year-end.

### Top Sector Mix (%)

	June '08	Sept. '08
Financials	12.3	13.4
Energy	15.3	11.8
Materials	9.9	6.3
Information Technology	4.6	3.6
Consumer Discretionary	3.2	3.4
Industrials	3.6	2.9
Health Care	1.8	2.5
Telecommunication Services	2.0	2.1
Consumer Staples	1.7	1.8
Utilities	1.3	0.9

### Downside Risk

Rolling Returns*	1 yr.	Ended	3 yr.	Ended	5 yr.	Ended	10 yr.	Ended
Best	25.75%	Feb-04	16.32%	Mar-06	12.06%	Sep-07	–	–
Worst	-8.34%	Sep-08	1.11%	Sep-08	6.69%	Sep-08	–	–
Average	10.00%		10.58%		10.25%		–	
Total periods	66		42		18		–	
Percentage of positive periods	93.9%		100%		100%		–	

\* Ended September 30, 2008

# DISCLAIMER

Please consult your financial advisor and read the prospectus before investing. There may be commissions, trailing commissions, management fees and expenses associated with mutual fund investments. Mutual funds are not guaranteed; their values change frequently and past performance may not be repeated. Except as otherwise noted, the indicated rates of return are the historical annual compounded total returns for the period ended September 30, 2008. The rates of return for periods of less than one year are simple rates of return. All rates of return and performance data include changes in unit value and assume reinvestment of all distributions, and do not take into account sales, redemption, distribution or optional charges or income taxes payable by any unitholders that would have reduced returns. Mutual funds are not guaranteed or covered by the Canada Deposit Insurance Corporation or any other government deposit insurer. For money market funds, there can be no assurances that a fund will be able to maintain its net asset value per security at a constant amount or that the full amount of your investment in a fund will be returned to you. For money market funds, the current yield is an annualized historical yield based on the seven-day period ended on September 30, 2008, and does not represent an actual one year return. RBC Funds are offered by RBC Asset Management Inc. and distributed through authorized dealers.

RBC Canadian Short-Term Income Fund's investment objective changed June 28, 2002.

RBC U.S. Mid-Cap Equity Fund's and RBC Global Balanced Fund's portfolio advisor and investment objectives changed June 29, 2001. RBC Balanced Growth Fund is the continuing fund resulting from a merger with RBC Global Balanced Fund on July 4, 2006. RBC Balanced Growth Fund's investment objective changed July 4, 2006.

RBC Canadian Index Fund, RBC North American Growth Fund, RBC U.S. Index Fund, RBC Asian Equity Fund and RBC Global Technology Fund are continuing funds resulting from mergers effective June 28, 2002. RBC North American Growth Fund's investment objective changed July 4, 2006. The inception date for the RBC Asian Equity Fund is August 1993. The Fund's investment objectives changed June 28, 2002. The "Since Inception" rate of return for this Fund includes data from June 28, 2002 only.

The inception date for the RBC Global Technology Fund is June 2000. The Fund's investment objective changed June 28, 2002 and July 4, 2006. The "Since Inception" rate of return for this Fund includes data from June 28, 2002 only.

The inception date for the RBC U.S. Equity Fund is July 1966; however the "Since Inception" rate of return for this Fund includes data from October 1972 only.

RBC European Equity Fund's portfolio advisor changed July 1, 2002.

RBC Premium \$U.S. Money Market Fund was launched November 1, 2007. RBC O'Shaughnessy U.S. Growth Fund II was launched January 14, 2008. Securities regulations do not allow us to report performance for any series of an investment that has been available for less than one year.

Quartile rankings are determined by Morningstar Research Inc., an independent research firm. Quartile rankings are comparisons of the performance of a fund to other funds in a particular category and are subject to change monthly. The quartiles divide the data into four equal segments expressed in terms of rank (1, 2, 3 or 4). This is the Morningstar quartile ranking of Series A units of the Fund as of September 30, 2008. For more information, please see [www.morningstar.ca](http://www.morningstar.ca).

The information contained in the Investment Outlook, Asset Class Commentary and Fund Commentaries is compiled from sources believed to be reliable, but no representation or warranty, express or implied, is made as to its accuracy. All opinions contained in the Investment Outlook, Asset Class Commentary are current to September 30, 2008 and in the Fund Commentaries are current to September 30, 2008, and are subject to change without notice and are provided in good faith without legal responsibility.

As of December 9, 2005, units of the RBC Monthly Income Fund are no longer available for purchase in registered plans, except through a pre-authorized investment plan established prior to December 9, 2005. Purchases in non-registered plans continue unaffected.

Effective June 30, 2006, RBC O'Shaughnessy U.S. Growth Fund is closed to new purchases, except through a pre-authorized investment plan established with RBC Asset Management and through automatic reinvestment of distributions.

Effective January 19, 2007, RBC O'Shaughnessy Canadian Equity Fund is closed to new purchases, except through a pre-authorized investment plan established with RBC Asset Management and through automatic reinvestment of distributions.

RBC Target 2015 Education Fund is the continuing fund resulting from a merger with RBC Global Education Fund on July 4, 2006.

The investment objectives of the RBC North American Dividend Fund, RBC North American Value Fund, RBC Global Energy Fund, RBC Global Precious Metals Fund, RBC Global Resources Fund and the RBC Global Consumer and Financials Fund changed July 4, 2006.

® Registered trademarks of Royal Bank of Canada. RBC Asset Management is a registered trademark of Royal Bank of Canada. Used under licence. © RBC Asset Management Inc. 2008.